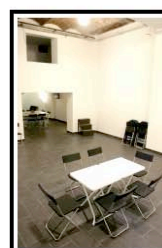
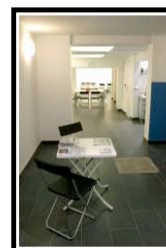
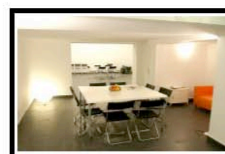
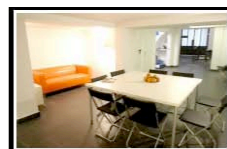


# SALA CONSERVAS



Calle Sant Pau 58  
08001 Barcelona  
Metro: Liceu  
Tel: +34 933020630  
[info@conservas.tk](mailto:info@conservas.tk)  
<http://conservas.tk>

# INDEX

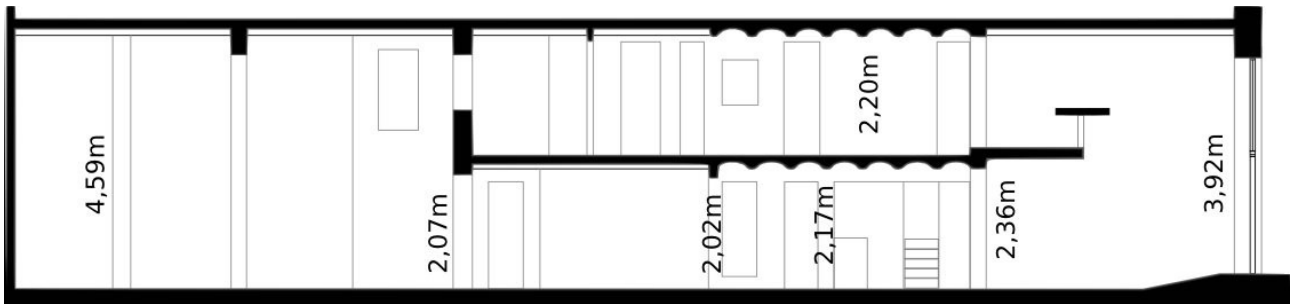
- 1-what do we offer? ... page...3
- 2-measurements ... page...4
- 3-spaces ... page...5
- 4-accessibility ... page...11
- 5-infrastructure ... page...12
- 6-the main space + tech rider ... page...14
- 7-the rest of the space ... page...17

# 1-what do we offer?

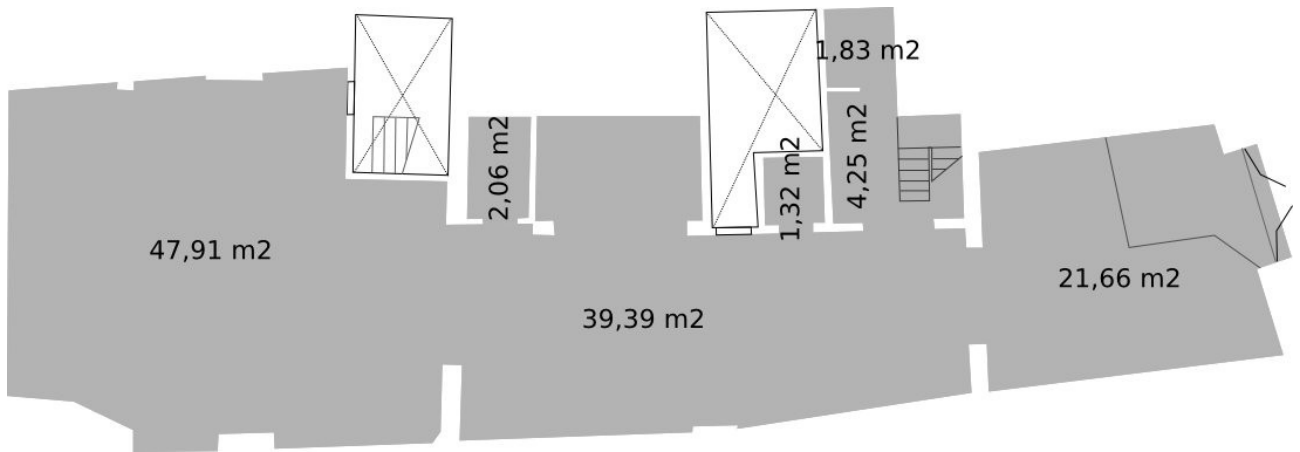
Sala Conservas offers a space for hire for all types of audiovisual productions. Situated in the heart of the Raval district of Barcelona, surrounded by the hustle and bustle of this area, oozing with energy and vitality, Conservas occupies this historic location on calle Sant Pau, and has recently reopened its doors completely renovated.



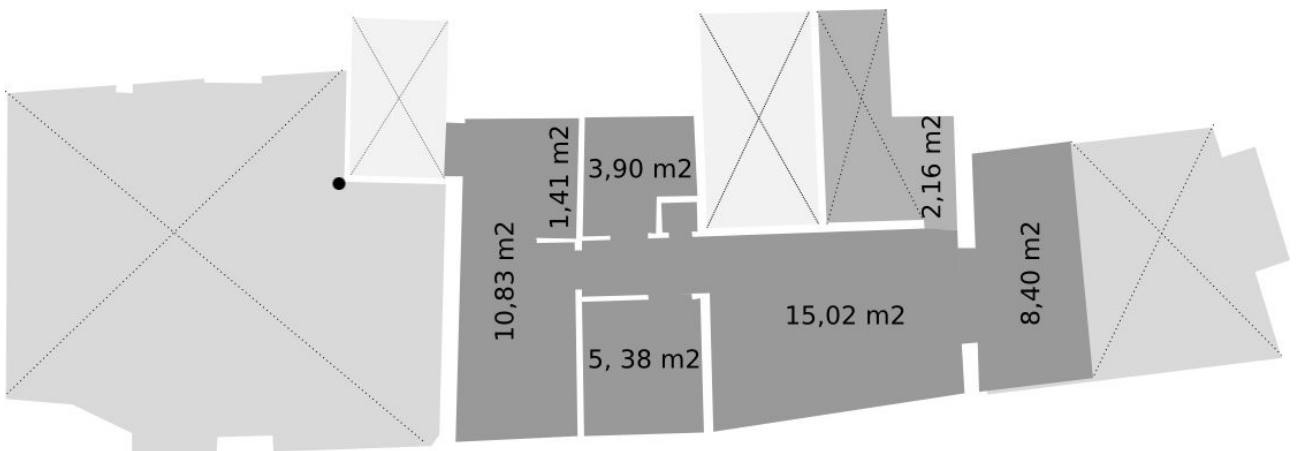
## 2-measurements of sala Conservas



section

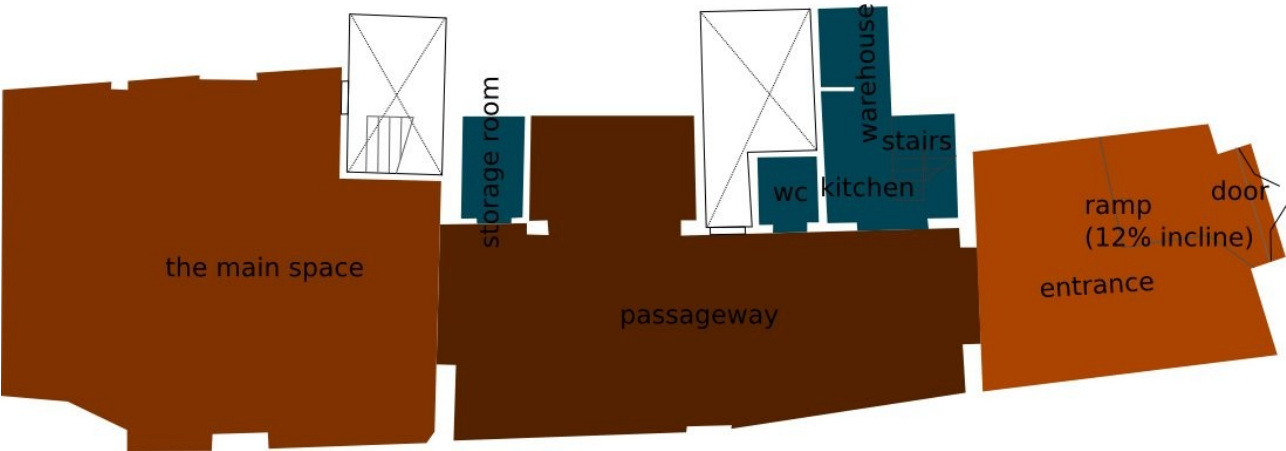


ground floor

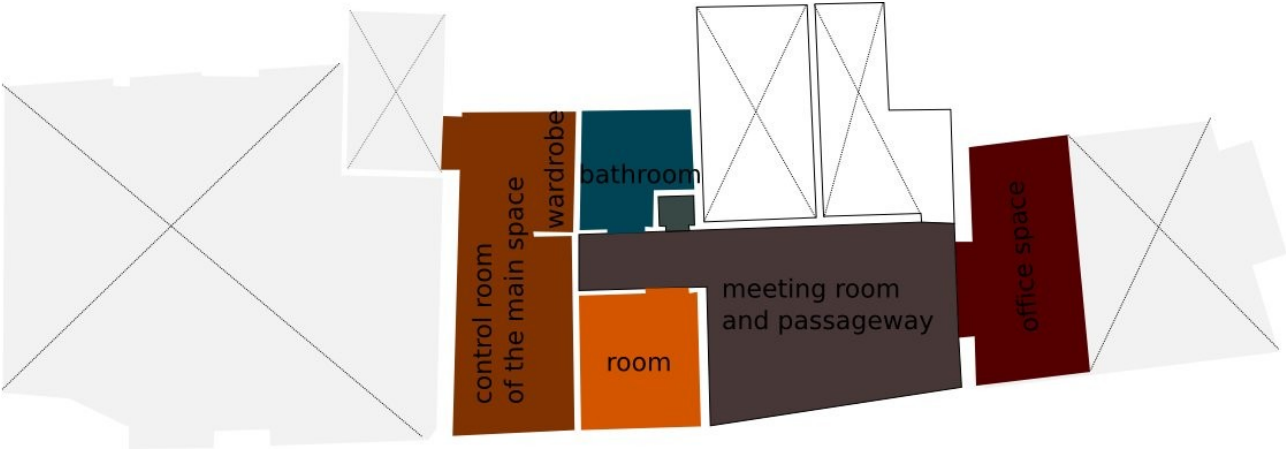


first floor

# 3-sala Conservas spaces



ground floor



first floor



kitchen and passageway / ground floor



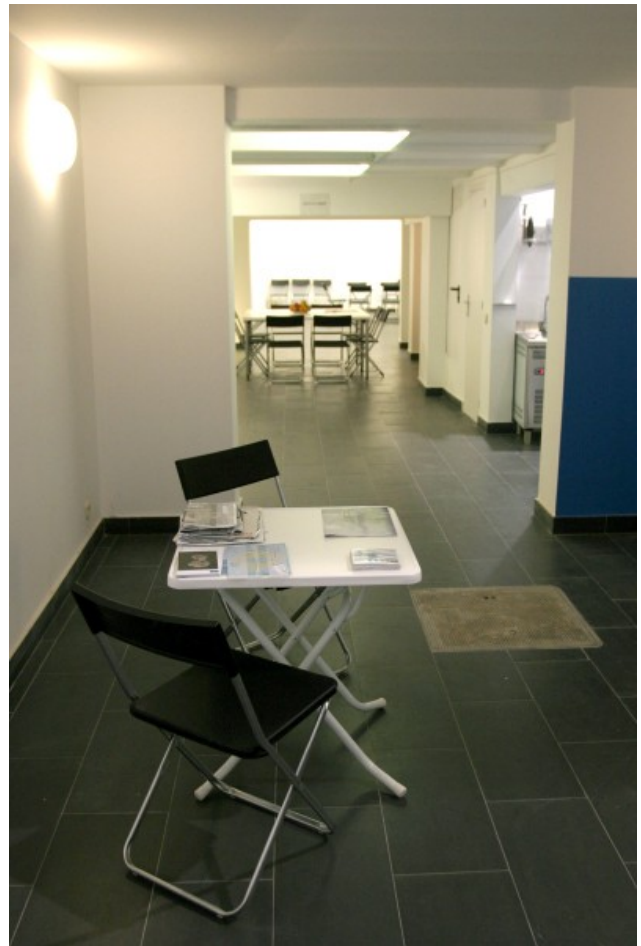


the main space / ground floor









entrance / ground floor



passageway / ground floor



office space and meeting room / first floor



office space / first floor

## 4-accessibility

> the front door, when open fully, measures 2.15m width  
with direct access to the street

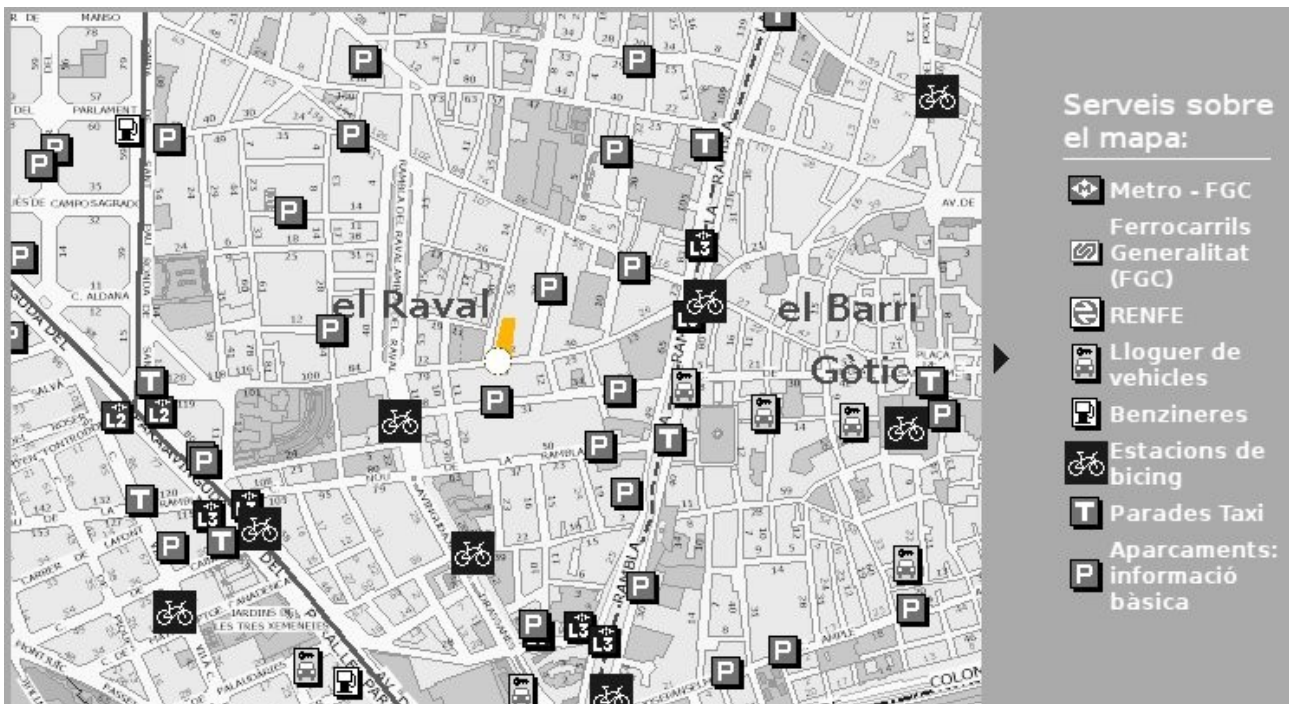
> easily load and unload your equipment from inside the  
space using ramp (slope of 12%)

> nearest parking:

C.Junta de Comerç, 13-15, open every day, 24h, tel.  
933026101

C.Marquès de Barberà, 16, open Monday to Friday from 8h  
to 20h, Saturdays from 8h to 14h, tel 934422378

C.Riereta, 35, open every day, from 8h to 20h, tel  
933298712



(map from the website <http://www.bcn.cat>)

## 5-infrastructure

### > furniture:

large office table 150x75 cm >> 4 units

small office table 67x67 cm >> 6 units

black foldable seat >> 40 units

orange sofa (seats 3) >> 1 unit

### > office space:

fixed work table with natural light, round table and seating / first floor

wireless internet

landline

printer-scanner

### > kitchen:

cooker with butane gas supply

refrigerator >> 2 units

freezer >> 1 unit

kitchen utensils for cooking and eating

worktop space

**> Other features:**

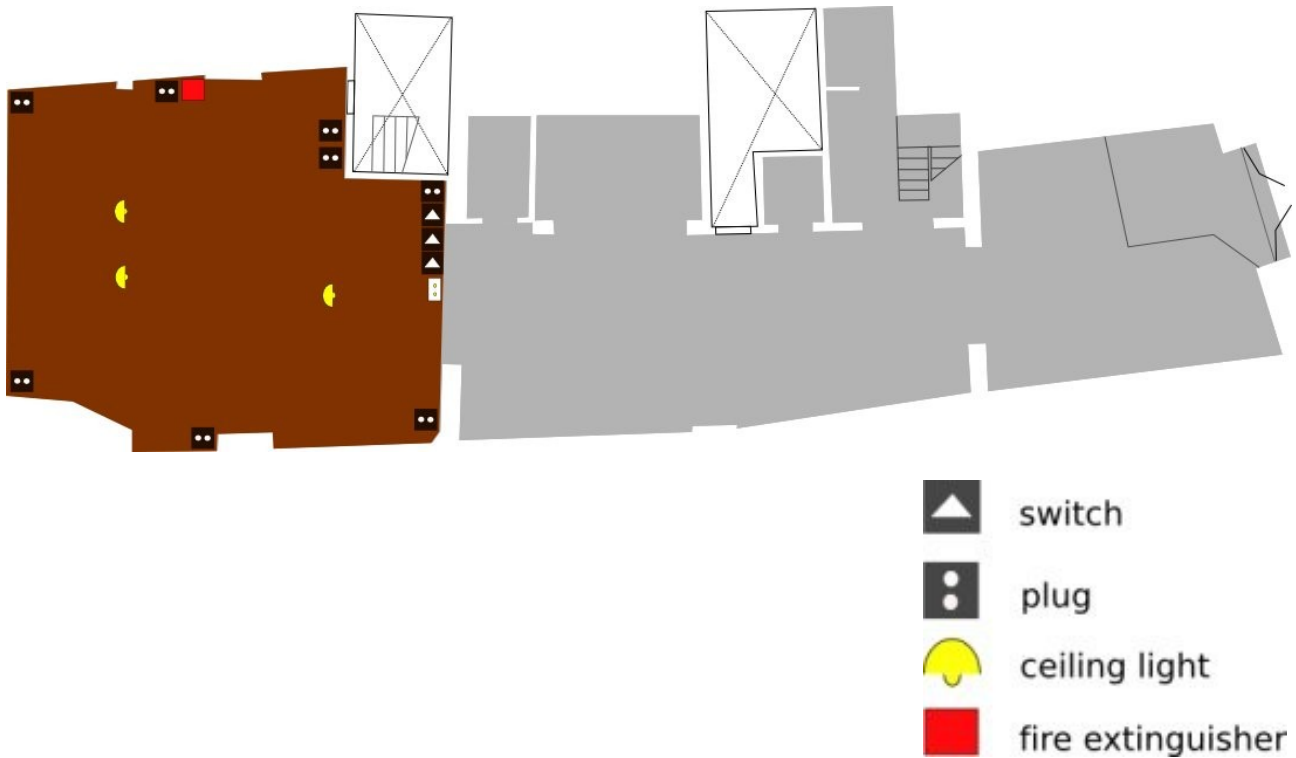
bedroom >> 1

wardrobe with hanging space >> 1

mirror (full body) >> 1

5 Sumescal stage platforms, max height 1.20m (in the  
main space) >> 5

## 6-the main space + tech rider



### Tech Rider

#### // Conservas Sound Rider

#### / PA

> Speakers Behringer EUROLIVE S1220. 70w continuous power, 280w Peak power

> Amp PA Simarc 100M MOS-FET 100w

> 2 Speaker stands

## **/ Control**

- > Studiomaster SESSION MIX 8-2 Gold. 8 phantom channels, 1 parametric ecu, inserts, 4 aux
- > Behringer ULTRAGRAPH PRO FBQ 3102, 31 band ecu

## **/ Microphones**

- > Shure 10A
- > Shure prologue 10L
- > 2x ULTRA-DI100 Behringer
  - > 2 floor mic stands
  - > 2 table mic stands
- > 4 XLR channel from stage to control room
  - > XLR and RCA support wires

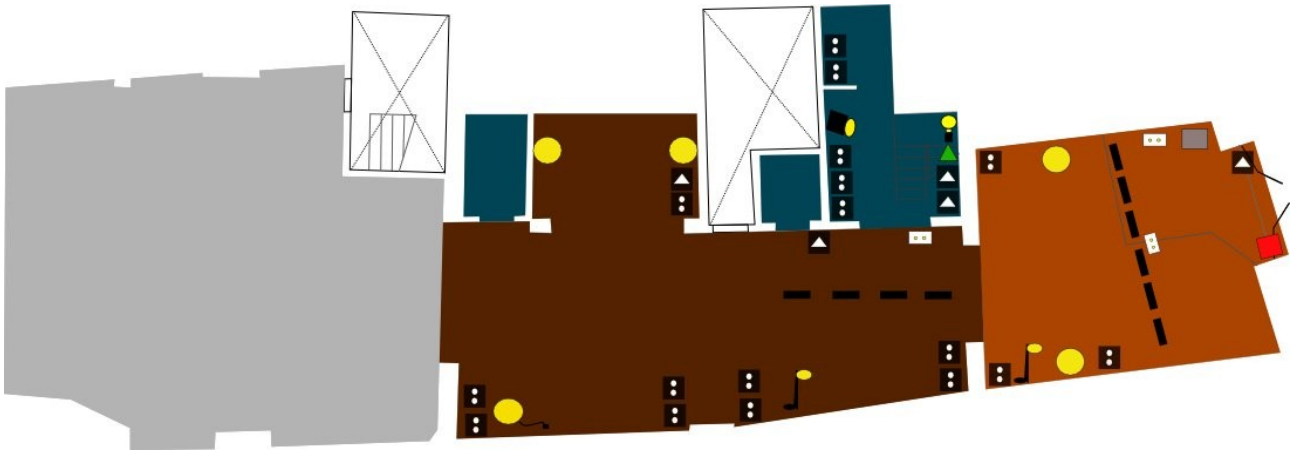
## **// Conservas Video Rider**

- > 1 RCA-Video from stage to control room
  - > 1 VGA from stage to control room
    - > VGA to PAL transformer
    - > Inhambric PAL Sender

- > Mitsubishi LCD Data Projector XL30U sRGB. PAL and VGA inputs. BNC, RCA and VGA; Monitoring out
  - > VGA and RCA support wires

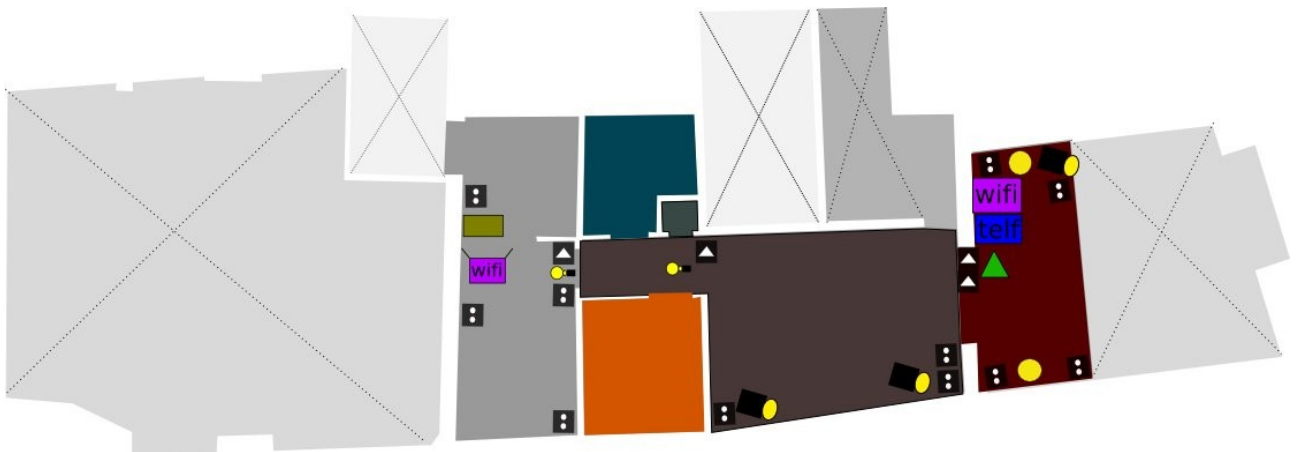


# 7-the rest of the space



ground floor

- |  |                   |  |                     |
|--|-------------------|--|---------------------|
|  | switch            |  | wall light          |
|  | plug              |  | stand-up light      |
|  | emergency light   |  | floor light         |
|  | fire extinguisher |  | electric doorkeeper |
|  | fluorescent light |  | spotlight           |
|  | light panel       |  | light bulb          |



first floor

- |  |                   |  |                     |
|--|-------------------|--|---------------------|
|  | wireless router   |  | wall light          |
|  | wifi access point |  | electric doorkeeper |
|  | landline          |  | plug                |
|  | commuter panel    |  | switch              |
|  | light bulb        |  | spotlight           |